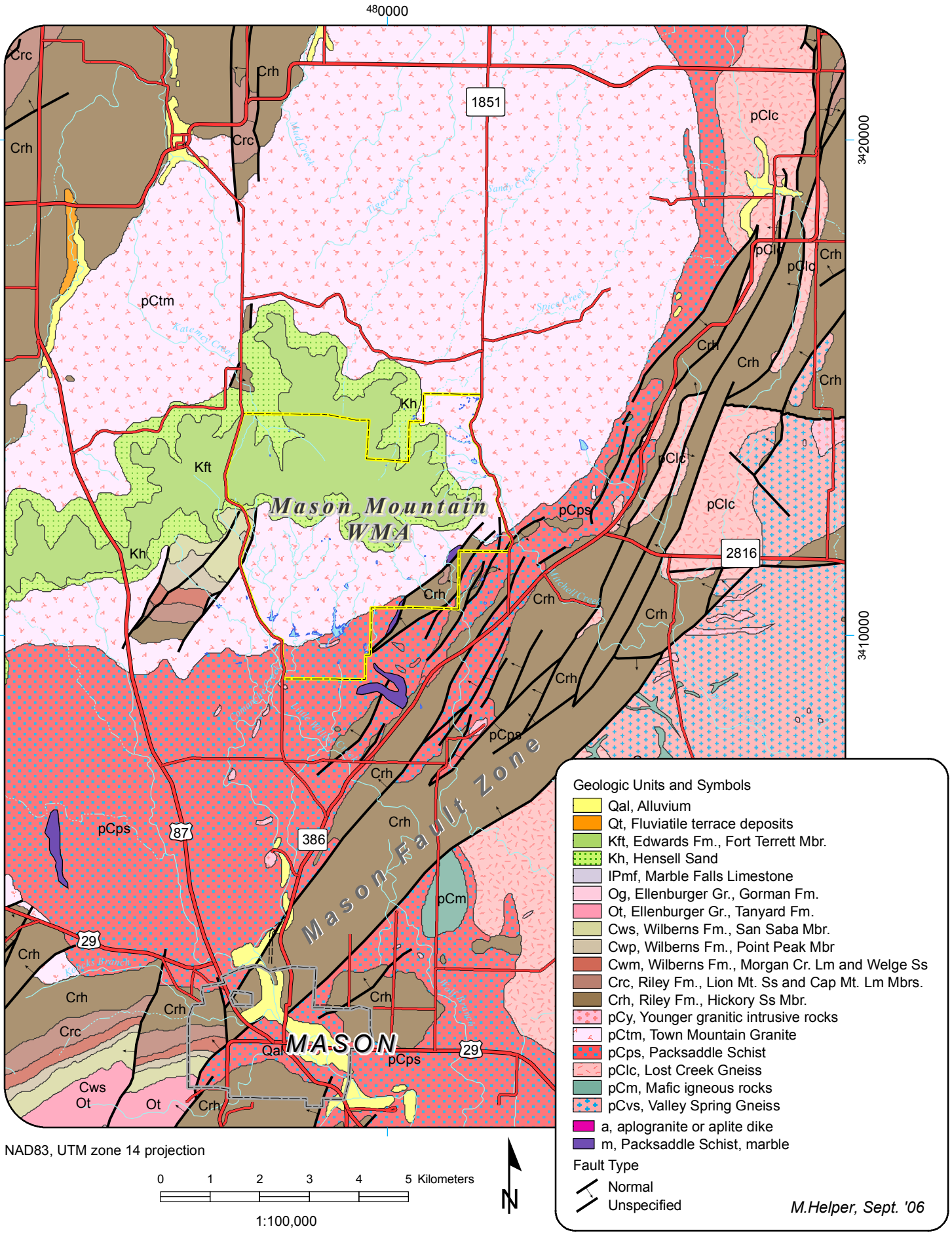


# Geologic Map of North-Central Mason County, Texas



### Geologic Units and Symbols

- Qal, Alluvium
- Qt, Fluvial terrace deposits
- Kft, Edwards Fm., Fort Terrett Mbr.
- Kh, Hensell Sand
- IPmf, Marble Falls Limestone
- Og, Ellenburger Gr., Gorman Fm.
- Ot, Ellenburger Gr., Tanyard Fm.
- Cws, Wilberns Fm., San Saba Mbr.
- Cwp, Wilberns Fm., Point Peak Mbr.
- Cwm, Wilberns Fm., Morgan Cr. Lm and Welge Ss
- Crh, Riley Fm., Lion Mt. Ss and Cap Mt. Lm Mbrs.
- Crh, Riley Fm., Hickory Ss Mbr.
- pCy, Younger granitic intrusive rocks
- pCtm, Town Mountain Granite
- pCps, Packsaddle Schist
- pClc, Lost Creek Gneiss
- pCm, Mafic igneous rocks
- pCvs, Valley Spring Gneiss
- a, aplogranite or aplite dike
- m, Packsaddle Schist, marble

### Fault Type

- Normal
- Unspecified

M.Helper, Sept. '06

NAD83, UTM zone 14 projection

