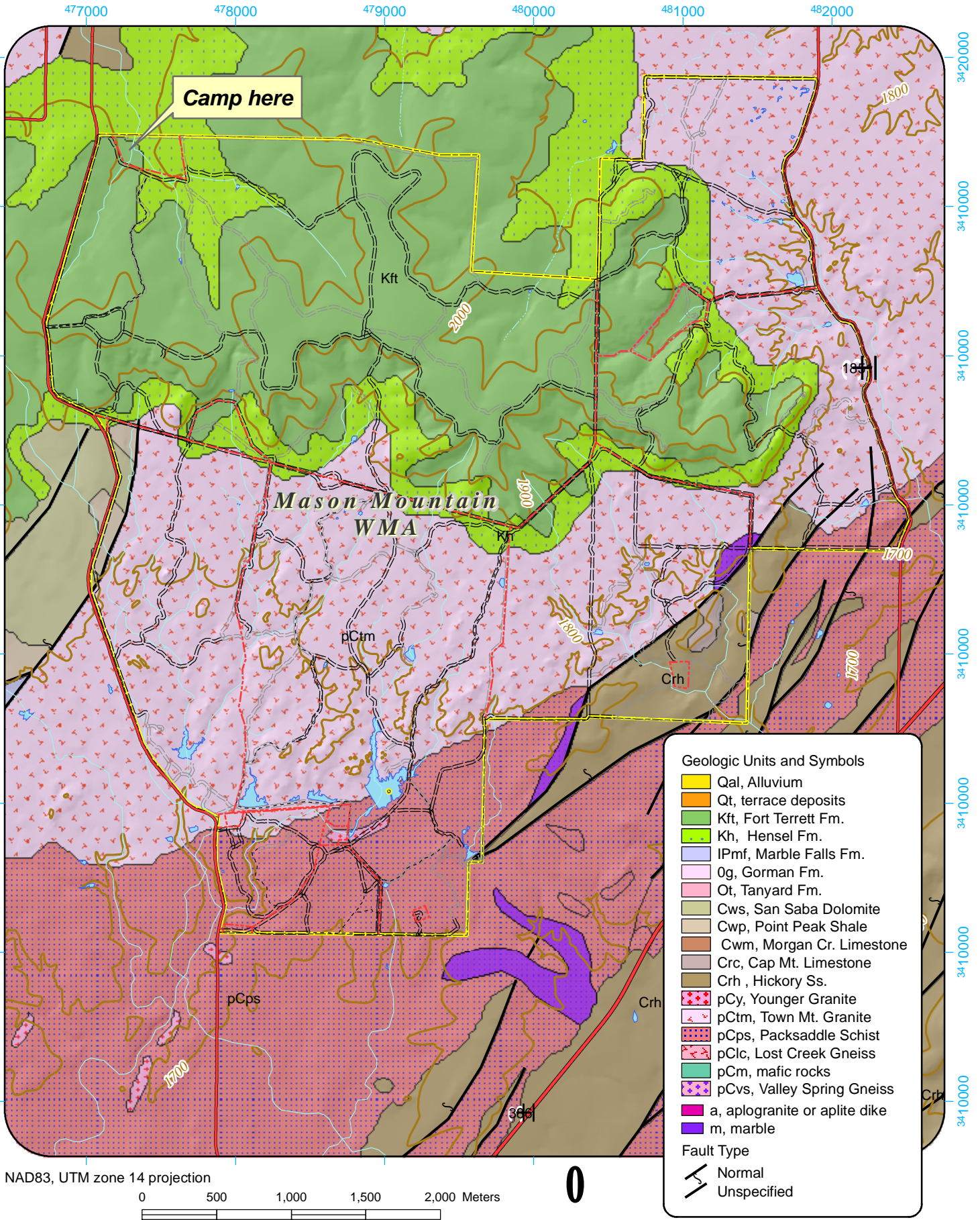


Geologic Map of the Mason Mountain W.M.A., Mason Co., TX



Camp here

Mason Mountain
WMA

Geologic Units and Symbols

- Qal, Alluvium
- Qt, terrace deposits
- Kft, Fort Terrett Fm.
- Kh, Hensel Fm.
- IPmf, Marble Falls Fm.
- Og, Gorman Fm.
- Ot, Tanyard Fm.
- Cws, San Saba Dolomite
- Cwp, Point Peak Shale
- Cwm, Morgan Cr. Limestone
- Crc, Cap Mt. Limestone
- Crh, Hickory Ss.
- pCy, Younger Granite
- pCtm, Town Mt. Granite
- pCps, Packsaddle Schist
- pClc, Lost Creek Gneiss
- pCm, mafic rocks
- pCvs, Valley Spring Gneiss
- a, aplogranite or aplite dike
- m, marble

Fault Type

- Normal
- Unspecified

NAD83, UTM zone 14 projection

0 500 1,000 1,500 2,000 Meters

1:34,000

Contour interval equals 100 feet

M.Helper, Feb. '06